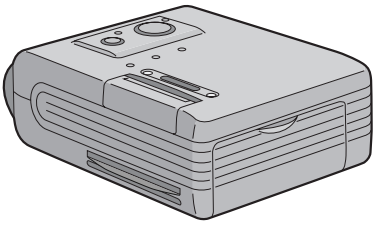


Panasonic®

SD Mobile Printer Operating Instructions

Model No. SV-P10U



Before use, please read these instructions completely.



MultiMediaCard™

For USA assistance, please call: 1-800-211-PANA(7262) or send e-mail to: consumerproducts@panasonic.com

For Canadian assistance, please call: 1-800-561-5505 or visit us at www.panasonic.ca

VQT9628

Before opening the CD-ROM package, please read the following.

End User License Agreement

You ("Licensee") are granted a license for the Software defined in this End User Soft Agreement ("Agreement") on condition that you agree to the terms and conditions of this Agreement. If Licensee does not agree to the terms and conditions of this Agreement, promptly return the Software to Matsushita Electric Industrial Co., Ltd. ("Matsushita"), its distributors or dealers from which you made the purchase.

Article 1 License

Licensee is granted the right to use the software, including the information recorded or described on the CD-ROM, instruction manuals, and any other media provided to Licensee (collectively "Software"), but all applicable rights to patents, copyrights, trademarks and trade secrets in the Software are not transferred to Licensee.

Article 2 Use by a Third Party

Licensee may not use, copy, modify, transfer or allow any third party, whether free of charge or not, to use, copy or modify the Software, except as expressly provided for in this Agreement.

Article 3 Restrictions on Copying the Software

Licensee may make a single copy of the Software in whole or a part solely for back-up purpose.

Article 4 Computer

Licensee may use the Software only on one computer, and may not use it on more than one computer.

Article 5 Reverse Engineering, Decompiling or Disassembly

Licensee may not reverse engineer, decompile, or disassemble the Software, except to the extent either of them is permitted under law or regulation of the country where Licensee resides. Matsushita, or its distributors will not be responsible for any defects in the Software or damage to Licensee caused by Licensee's reverse engineering, decompiling, or disassembly of the Software.

Article 6 Indemnification

The Software is provided "AS-IS" without warranty of any kind, either expressed or implied, including, but not limited to, warranties of non-infringement, merchantability and/or fitness for a particular purpose. Further, Matsushita does not warrant that the operation of the Software will be uninterrupted or error free. Matsushita or any of its distributors will not be liable for any damage suffered by Licensee arising from or in connection with Licensee's use of the Software.

Article 7 Export Control

Licensee agrees not to export or re-export to any country the Software in any form without the appropriate export licenses under regulations of the country where Licensee resides, if necessary.

Article 8 Termination of License

The right granted to Licensee hereunder will be automatically terminated if Licensee contravenes of any of the terms and conditions of this Agreement. In the event, Licensee must destroy the Software and related documentation together with all the copies thereof at Licensee's own expense.

Contents

End User License Agreement	2
Information for Your Safety	4
Supplied Accessories	5
Optional Accessories.....	5
Introduction.....	5
Quick Guide.....	6
Lamp indication list	6

Preparation

Controls and Components.....	7
Power Supply	8
Using AC Adaptor	8
Using the Battery	8
Paper/Ink cassette.....	9
Paper That Can Be Used For Printing	9
Inserting the Ink Cassette.....	10
Inserting a SD Memory Card/ MultiMediaCard	10

Basic Functions

Printing images.....	11
----------------------	----

Connecting with a personal computer

Operating environment.....	12
Installing the Printer Driver	13
Printer setting	17
Printing a file in the computer.....	18
If you use Windows XP:	18
Notes on Installation of Printer Driver	18
Uninstalling the Printer Driver.....	18

Others

After Use	18
Precautions	19
Ink Cassette/Paper Set Notes.....	19
Ink Cassette Notes.....	19
Paper Notes	19
Before, During, and After Printing	19
Notes on Handling Finished Prints.....	20
Optimal Use of the Battery.....	20
Notes on Memory Cards.....	21
Notes on the SD Memory Card Write-Protect Switch	21
Notes on Handling the SD Mobile Printer	21
Installation Notes	21
Maintenance Notes.....	21
Internal Temperature	21
Condensation.....	21
About Unclean Thermal Heads.....	21

Error Lamp.....	22
About this Printer	22
About the Battery	22
Messages from the Printer Driver.....	23
Before Requesting Service	23
Specifications.....	25
Limited Warranty.....	26
Customer Services Directory	27
Spanish Quick Use Guide/ Guía española para el uso rápido.....	28
Guía española para el uso rápido.....	28
Lista de luces indicadoras.....	29

Dear Customer,

We would like to take this opportunity to thank you for purchasing this Panasonic SD Mobile Printer. Please read these Operating Instructions carefully and keep them handy for future reference.

Information for Your Safety


WARNING
TO REDUCE THE RISK OF FIRE OR SHOCK HAZARD AND ANNOYING INTERFERENCE, USE ONLY THE RECOMMENDED ACCESSORIES AND DO NOT EXPOSE THIS EQUIPMENT TO RAIN OR MOISTURE. DO NOT REMOVE THE COVER (OR BACK); THERE ARE NOT USER SERVICEABLE PARTS INSIDE. REFER SERVICING TO QUALIFIED SERVICE PERSONNEL.

- Do not open the Ink Cassette Compartment Door while printing is in progress. Your fingers could be pinched between the thermal head arms and the Ink Cassette.

IMPORTANT

Please respect all copyrights.

Whatever you have recorded and created can be used for your personal entertainment only. Under copyright laws, other materials cannot be used without obtaining permission from the holders of the copyrights.

- Please note that the actual controls and components, etc. of your printer may look somewhat different from those shown in the illustrations in these Operating Instructions.
- Only an SD Memory card or MultiMediaCard can be used for this printer.
-  : SD Logo is a trademark.
- Microsoft Windows is a trademark of Microsoft Corporation in the United States.
- Other names, company names, and product names printed in these instructions are trademarks or registered trademarks of the companies concerned.
- The contents or complete reproduction or copy of these Operating Instructions could be changed without notice.
- The USB-IF Logos are trademarks of Universal Serial Bus Implementers Forum, Inc.
- **(→ 00) indicates the page to be referred to.**

FCC Note: (U.S. only)

This equipment has been tested and found to comply with the limits for a Class B digital device, pursuant to Part 15 of the FCC Rules. These limits are designed to provide reasonable protection against harmful interference in a residential installation. This equipment generates, uses, and can radiate radio frequency energy and, if not installed and used in accordance with the instructions, may cause harmful interference to radio communications. However, there is no guarantee that interference will not occur in a particular installation. If this equipment does cause harmful interference to radio or television reception, which can be determined by turning the equipment off and on, the user is encouraged to try to correct the interference by one or more of the following measures:

- Reorient or relocate the receiving antenna.
- Increase the separation between the equipment and receiver.
- Connect the equipment into an outlet on a circuit different from that to which the receiver is connected.
- Consult the dealer or an experienced radio/TV technician for help.

FCC Caution: To assure continued compliance, follow the attached installation instructions and use only shielded interface cables with ferrite core when connecting to computer or peripheral devices.

Any changes or modifications not expressly approved by the party responsible for compliance could void the user's authority to operate this equipment.

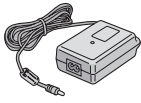
Trade Name:	Panasonic
Model No.:	SV-P10U
Responsible party:	Matsushita Electric Corporation of America One Panasonic Way, Secaucus, NJ 07094
Support Contact:	Panasonic Consumer Electronics Company 1-800-211-PANA(7262)

This device complies with Part 15 of the FCC Rules. Operation is subject to the following two conditions: (1) This device may not cause harmful interference, and (2) this device must accept any interference received, including interference that may cause undesired operation.

This Class B digital apparatus complies with Canadian ICES-003.

Supplied Accessories

**AC Adaptor
(VSK0617)**



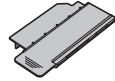
**Power Cable
(JSX0102)**



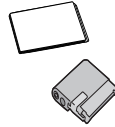
**USB Connection
Cable
(K2KZ4CB00001)**



**Head Cleaner
(VFQ0105)**



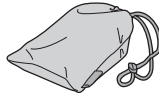
**Ink Cassette/Paper
set (For trial/20
sheets)**



**CD-ROM
(VFF0140)**



**Carrying Case
(RFC0069-H)**



**Battery Pack
(CGR-S601)**



Optional Accessories

**Battery Pack
(CGR-S601)**

**Ink Cassette/Paper set
(VW-MCA30U/MCASD1U/MCASD4U)**

Introduction




This is a printer to print still pictures recorded on a card taken by an SD Multi AV Device or other digital devices using SD/MultiMediaCard.

Pictures DPOF-set by the SD Multi AV Device can be printed.



Install the accessory printer driver on your personal computer to use the printer with your PC.

Quick Guide

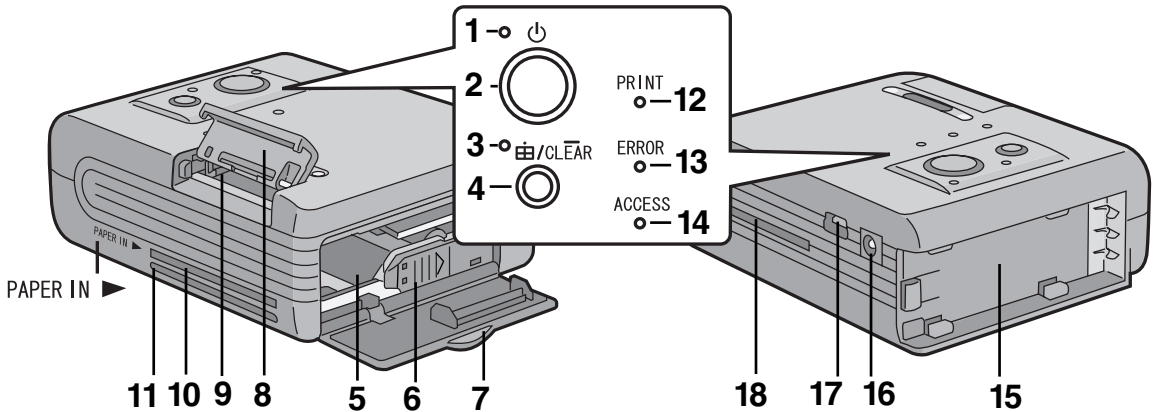
For details, read the respective pages shown in the brackets.

- 1 **Insert the ink cassette with a blue guide fitted. (→ 10)**
 - If the ink sheet is loosened, tighten it before use.
- 2 **Insert a card storing picture data. (→ 10)**
- 3 **Hold down the Power Button [] for about 2 seconds. (→ 11)**
 - Turn on the SD Mobile Printer.
- 4 **When the information contained in the card is completed to be read, the [PRINT] Lamp lights. (→ 11)**
- 5 **Insert a sheet of paper with the [ /1/4] mark side down into the [PAPER IN ►] slot (Upper slot). (→ 11)**
- 6 **After printing, hold down the Power Button [] for about 2 seconds. (→ 18)**
 - Turn off the SD Mobile Printer.

■ Lamp indication list

Status/Lamp		 /CLEAR	PRINT	ERROR	ACCESS
The power is turned ON.	Lights.				
The battery will run down shortly.	Flashes.				
Charging.	Flashes.				
The 4-Picture mode is selected.		Lights.			
Printing is ready. Insert a sheet of paper to start printing.			Lights.		
Pre-heating at a low temperature*			Lights.		
Printing...			Flashes.		
No ink cassette				Flashes.	
Ink runs down.				Flashes.	
Accessing a card.					Lights.
Battery error	Flashes.			Flashes.	
Temperature error (Wait until the temperature lowers.)			Lights.	Flashes.	
Paper jamming			Flashes.	Flashes.	
The card cannot be used.				Flashes.	Flashes.
No image data on the card				Flashes.	Flashes.
The battery temperature is too high. (Wait a while.)	Flashes.			Lights.	
External light error (Reorient the Printer.)		Flashes.		Flashes.	
Failure (hardware error)			Lights.	Lights.	
				Lights.	

*At a low temperature, the Printer stops operating for one to two minutes after drawing the paper in to heat itself. Wait until the temperature rises.



Preparation

Controls and Components

1 Power Lamp []

When you turn the power on, the Power Lamp turns on.

2 Power Button []

Hold down to turn on/off the SD Mobile Printer for about 2 seconds.

3 4-picture mode Lamp []

Lights up when in the 4-picture mode.

4 4-picture mode Button []

Press this to print the four same pictures on one sheet.

Clear Button []

Restarts to print the total number of sheets (the specified number of sheets, if DPOF is implemented) from the initial page.

5 Ink Cassette Insert Location

Insert the Ink Cassette.

6 Ink Cassette Eject Lever []

Slide to eject Ink Cassette.

7 Ink Cassette Compartment Door

8 Memory Card Door

9 Memory Card Slot

This is where the memory card is inserted.

10 Paper Insert Slot [PAPER IN ►]

Insert a sheet of paper here.

11 Paper Exit Slot

A printed paper exits here.

12 Print Lamp [PRINT]

When this Lamp lights up, the printer is ready to print.

13 Error Lamp [ERROR]

This lights when normal printing is no longer possible because, for example, the printing paper or ink has run out.

14 Access Lamp [ACCESS]

While the SD Mobile Printer is making an access to the Card, this Lamp lights up.

15 Battery Holder

Attach the battery here.

16 DC Input Socket [DC IN 4.9V]

Connect the AC Adapter (supplied accessory) to supply the power.

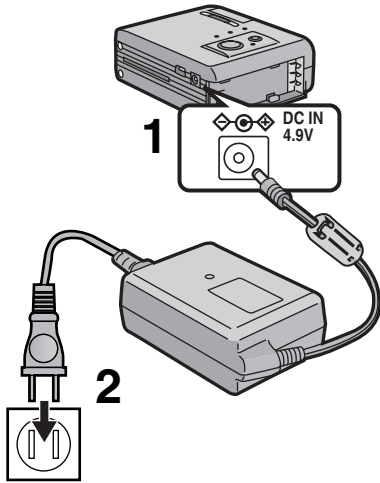
17 USB Socket [USB]

Connect the accessory USB cable here for connection to your personal computer.

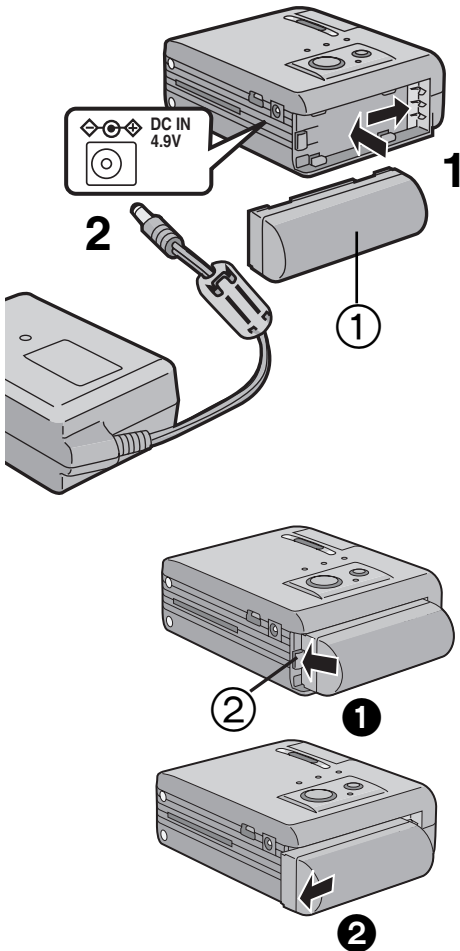
18 Paper Sliding Slot

This slot is the opening for sliding the paper in and out while printing. Do not touch the paper while printing.

Using AC Adaptor




Using the Battery



Power Supply

■ Using AC Adaptor


- 1 Connect the DC Input Lead to the [DC IN 4.9V] socket on the SD Mobile Printer.
- 2 Connect the AC Main Lead to the AC Adaptor and the AC outlet.

- Hold down the Power Button [] for about 2 seconds, and the printer is turned on.


The SOCKET OUTLET SHALL BE INSTALLED NEAR THE EQUIPMENT AND SHALL BE EASILY ACCESSIBLE.

■ Using the Battery

- 1 Attach the Battery ① to the Battery Holder on the SD Mobile Printer and slide it forward until it locks with a click.
- 2 Connect the AC Main Lead to the AC Adaptor and to an AC Outlet. (Refer to the description above.)

- The [] Lamp flashes.

- 3 Leave them as above until the Power Lamp [] goes off.

- When recharging is completed, the [] Lamp goes OFF.
- Remove the AC Adaptor to use the Battery.

Ejecting the Battery

Press and hold ① the claw ② toward the direction shown by the arrow and slide the battery to eject ②.

CAUTION

Danger of explosion if battery is incorrectly replaced.

Replace only with the same or equivalent type recommended by the manufacturer.

Dispose of used batteries according to the manufacturer's instructions.

- It takes about 100 minutes, maximum for full-charging. (at a temperature of 20°C and humidity 60%) If the Battery is charged at a higher or lower temperature, the charging time may be longer.
- When recharging, turn the power of the printer OFF.
- If the [ERROR] Lamp lights or flashes during recharging, recharging is not normal. Refer to "Error Lamp" on page 22.
- Remove the battery if the printer is left unused for a long time.
- Full charge of the battery enables you to print near up to 45 sheets continuously at ambient temperature.

Paper/Ink cassette

The following Ink Cassette/Paper sets may be used for this printer in addition to the paper/ink cassette supplied.

■ **Paper That Can Be Used For Printing**

The SD Mobile Printer can use the following types of paper. (optional)

- **2-3/4"×1-1/2"(69×38 mm) Printing Paper :**

The Ink Cassette/Paper Set (VW-MCA30U) is required.

This is a set consisting of an ink cassette and 30 sheets of standard paper.

- **2-3/4"×1-1/2"(69×38 mm) 1 Pre-Cut Adhesive Paper:**

The Ink Cassette/Paper Set (VW-MCASD1U) is required.

This is a set of an ink cassette and 30 sheets of an over-coating type of seal paper.

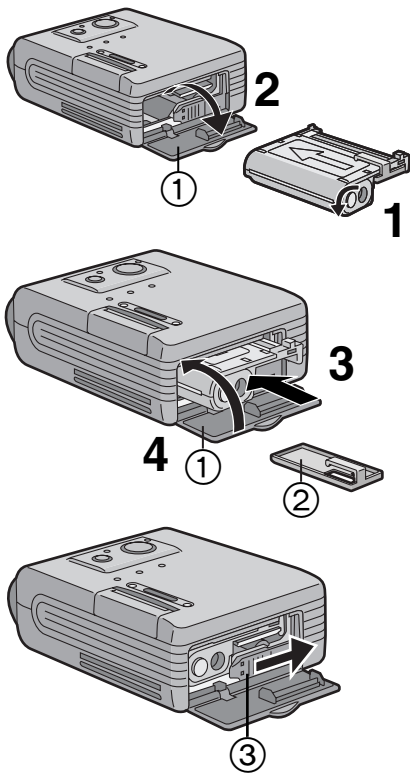
- **2-3/4"×1-1/2"(69×38 mm) 4 Pre-Cut Adhesive Paper:**

The Ink Cassette/Paper Set (VW-MCASD4U) is required.

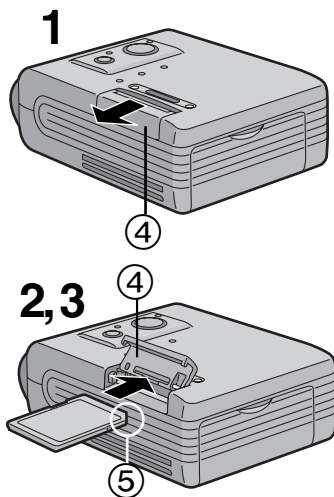
This is a set of an ink cassette and 30 sheets of an over-coating type of seal paper. (The 4-pre-cut type is a seal paper for printing the four same pictures.)

- Please read the "Precautions" carefully. (→ 19)
- Printing on paper with flawed surface may cause white patches on image printed.
- When using seal paper, do not peel off the seal. Otherwise, a paper jam or failure may be caused.
- When using seal paper, the picture printed may be displaced with reference to the cutting frame.
- When taking the paper out of the package, remove sheets one at a time in order from the bottom sheet (opposite to the protection sheet) Then, carefully stack the sheets by pulling them out about 3 cm off the package (Pay attention not to contact the paper with the adhesive portion of the package).

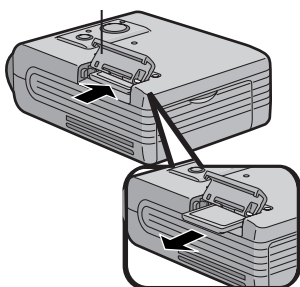
Inserting the Ink Cassette



Inserting a D Memory Card/ MultiMediaCard



Removing the Card



Inserting the Ink Cassette

- 1 Turn it in the direction of the arrow to clear any slack in the Ink Film.
- 2 Open Ink Cassette Compartment Door ①.
- 3 Push it into the direction shown by the arrow until it clicks into place.
 - The insert guide (blue) ② will come off.
 - At the first time, insert together with the insert guide ②. At the second time and thereafter, the insert guide is not necessary.
- 4 Close ①.

Ejecting the Ink Cassette

Slide the [III▶] Lever ③ to take out the Ink Cassette.

- Do not touch the Ink Film in the Ink Cassette, and do not pull it out of the cassette.
- It is recommended that you do not pull out the Ink Cassette before the full consumption of ink, because the Ink Film may sag when resetting the Ink Cassette.
- Confirm that there is no paper and then remove or replace the Ink Cassette.
- Close the Ink Cassette Compartment Door during printing.
- Do not eject the Ink Cassette during printing.
- When removing the Ink Cassette, pack it back into its original case.

Inserting a SD Memory Card/ MultiMediaCard

- 1 Slide the Memory Card Door ④, and flip it to open.
- 2 Hold the Memory Card placing the cut off corner ⑤ at the front with the label facing up, and then insert it fully into the Memory Card Slot horizontally.
 - When inserted appropriately, a clicking noise may sound.
- 3 Close the Memory Card Door ④.
 - After inserting the Memory Card, reverse the procedure in step 2 to close the Memory Card Door.

Removing the Card

Open the Memory Card Door and push the edge of the card to remove it.

- Insert/remove cards only when the power is off.
- Only an SD Memory card or MultiMediaCard can be used for this printer.
- Do not touch the terminals on the back of the Card with your fingers. Do not allow dirt, dust or water to contact the terminals.
- If the Memory Card Door is not closed completely, remove the Memory Card once and re-insert it.
- It may take a long time to read depending on the images in the Card ([ACCESS] Lamp lights while reading). For example, it takes about 40 seconds to read a JPEG image of four million pixels.

Basic Functions

Printing images


1 Insert a Memory Card. (→ 10)

- Images marked with the DPOF option will be printed. This feature is usually found in the digital camera or other SD video devices. This printer cannot be used to mark the desired photos using DPOF.
- If DPOF is not implemented, whole images are printed in order, commencing from the last one captured .

2 Hold down the Power Button [] for about 2 seconds.

- The Printer is turned on.
- When the [ACCESS] Lamp goes off and the [PRINT] Lamp lights up, the Printer is ready to print.

3 To execute the four-picture print (4 of same image), press the 4-Picture Mode Button [].

- The “  ” Lamp lights.
- Each pressing of this button alternately switches the mode (one picture or four pictures).

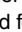
4 Insert a sheet of paper with the [/1/4] mark side down into the [PAPER IN ►] slot (Upper slot).

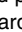
- Make sure the paper is fed into the [PAPER IN ►] slot on the unit. The Paper will then start to print. (If the Paper is not fed, push paper lightly to begin paper feed process)
- The paper is moved forward and backward several times and exits from the Paper Exit Slot. The printed paper is then ready to be removed from the Paper exit slot.
- When the 4-picture mode is selected, the same four pictures are printed equally on the quarterly divided sections of the paper.
- **Do not insert a sheet of paper into the Paper Exit Slot (lower slot), or paper jam may occur.**

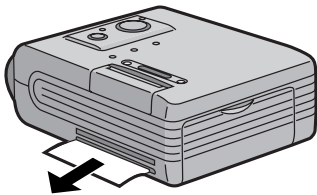
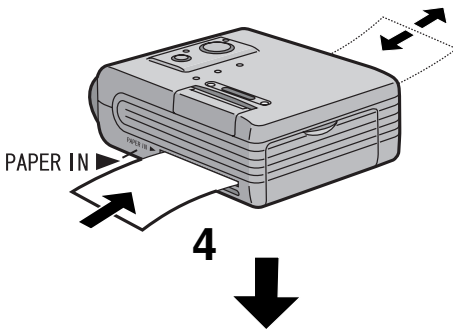
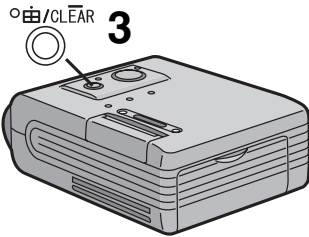
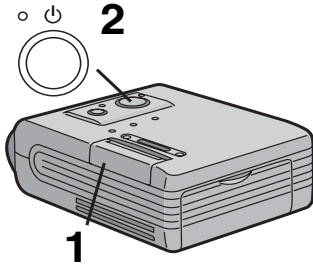
5 Repeat steps 3 and 4.

- The [PRINT] Lamp goes off after the total number of sheets (the specified number of sheets, if DPOF is implemented) all printed.

Stopping Printing

Press the Power Button [] for about 2 seconds to stop printing and turn off the power after the completion of current print job.

- Please read the “Precautions” carefully. (→ 19)
- “DPOF”: Digital Print Order Format; a feature that allows the user to mark photos that they wish to print. This feature is usually offered by the digital camera or other SD video devices.
- While the [ACCESS] Lamp is on, never take the card out or turn the power off. Additionally, never add any oscillation or shock on the device. This may cause damage to the memory card or the data contained in the card.
- Do not forcibly pull the Ink Film or paper. Do not allow fingerprints or dust or water to contact the Ink Film or paper.
- Do not forcibly pull out the paper while printing is in progress.
- If the [] Lamp flashes, the battery will run down shortly. Recharge the battery or plug the cord of the Printer into a wall outlet.
- If the [ERROR] Lamp lights up or flashes, refer to “Error Lamp” on page 22.
- When you insert a sheet of paper before the [PRINT] Lamp lights, printing does not occur. Re-insert the paper after the [PRINT] Lamp lights.



Connecting with a personal computer

Operating environment

Printer Driver can be installed in a PC/AT compatible personal computer which can run Microsoft® Windows® 98/98SE/Me/XP Home Edition/XP Professional/2000 Professional.

Compatible machines:

PC/AT compatible PC with Microsoft Windows® 98/98SE/Me/XP Home Edition/XP Professional/2000 Professional pre-installed.

Graphic display:

High Color (16 bit) or more.

Disk drive:

CD-ROM drive

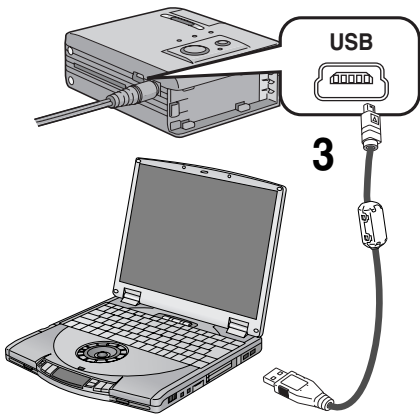
Ports:

USB Terminal

Other requirements:

Mouse

- A USB hub or USB card used for connection is out of guarantee for normal operation.
- The names of the products you are using may differ from the names given in the text. Depending on the operating environment and other factors, the contents of the screens used in these instructions may not necessarily match what you will see on your screen.
- Although the screens in these Operating Instructions are shown in English for the sake of example, other languages are supported as well.

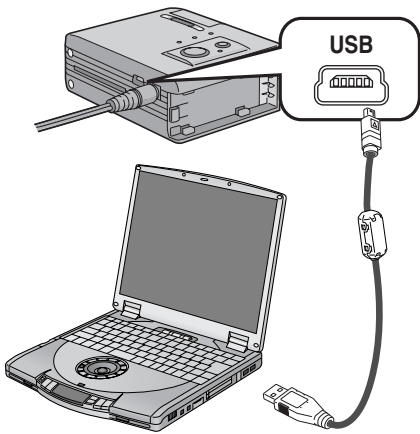


Installing the Printer Driver

Installing this printer driver allows the SD Mobile Printer to be used as a full-color printer.

For Windows®XP

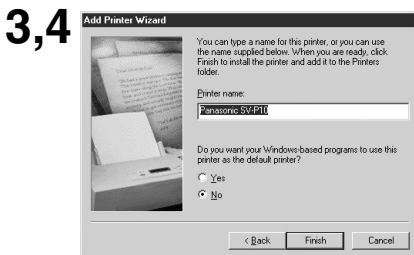
- 1 Turn on the personal computer and insert the supplied CD-ROM into the CD-ROM drive.**
- 2 Turn on the SD Mobile Printer.(→ 11)**
- 3 Use auxiliary USB Connection Cable to connect.**
 - The [Found New Hardware Wizard] screen appears.
- 4 Click the [Next] Button.**
 - Confirm that the item [Install the software automatically] is selected.
- 5 Click the [Finish] Button when the Printer Driver Software is detected.**
 - The driver setup is completed.
 - When the Printer Driver Software is not detected, please refer to page 16.
 - Please read also the “Notes on Installation of Printer Driver” (→ 18) carefully.



Installing the Printer Driver (Cont.)

For Windows®Me

- 1 **Proceed to steps 1 through to 3 on page 13.**
 - The [Add New Hardware Wizard] screen appears.
 - If the [Add New Hardware Wizard] screen does not appear, please refer to page 16.
- 2 **Click the [Next] Button.**
- 3 **Select [No] when the [Add Printer Wizard] screen appears.**
 - Select [Yes] to set as the default printer.
- 4 **Click the [Finish].**
- 5 **Click the [Finish] Button.**
 - The driver setup is completed.
 - When the Printer Driver Software is not detected, please refer to page 16.
 - Please read also the “Notes on Installation of Printer Driver” (→ 18) carefully.



2,7



3



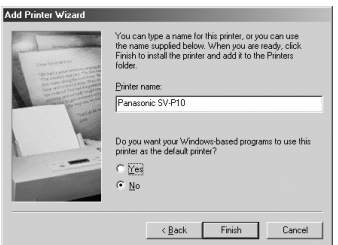
4,5



6



10,11

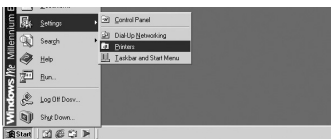


Installing the Printer Driver (Cont.)

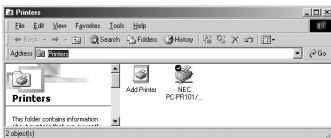
For Windows®98/98SE/2000

- 1 Proceed to steps 1 through to 3 on page 13.
- 2 Click the [Next] Button.
 - The [Add New Hardware Wizard] screen appears.
 - If the [Add New Hardware Wizard] screen does not appear, please refer to page 16.
- 3 Click the [Next] Button.
 - Confirm whether your device is configured to the optimal driver detection setting.
- 4 Check the location to be specified and enter the path as “D:\Win9X-ME” if your system is Windows98 (98SE). Enter the path as “D:\Win2K-XP” if your system is Windows 2000 (example of D drive assigned as CD-ROM drive).
- 5 Click the [Next] Button.
 - Re-click the [Next] Button when the search confirmation screen appears.
 - Replace the supplied CD-ROM with the Windows CD-ROM when the message “Insert the Windows CD-ROM.” appears.
- 6 Click the [Finish] Button.
- 7 [Add New Hardware Wizard] screen appears again. Click the [Cancel] Button.
- 8 Restart the computer.
- 9 [Add New Hardware Wizard] screen appears again. Repeat the steps from 3 through 6.
- 10 Select [No] when the [Add Printer Wizard] screen appears.
 - Select [Yes] to set as the default printer.
- 11 Click the [Finish] Button.
 - The driver setup is completed.
 - Please read also the “Notes on Installation of Printer Driver” (→ 18) carefully.

2



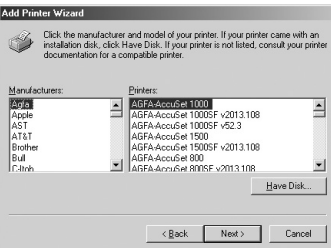
3



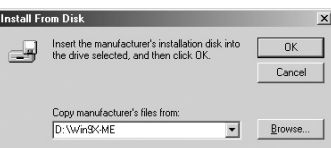
5



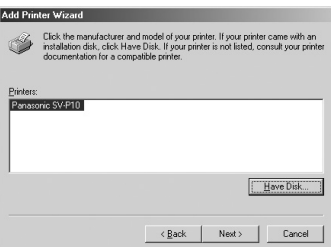
6



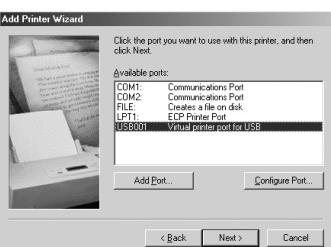
7



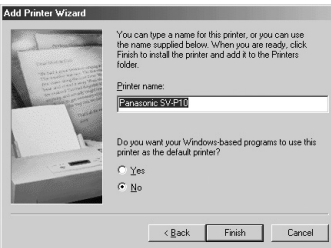
8



9



10,11

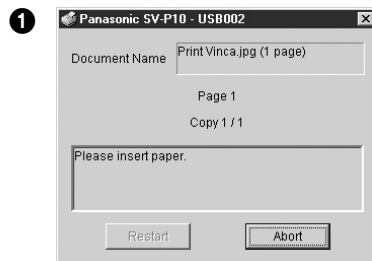
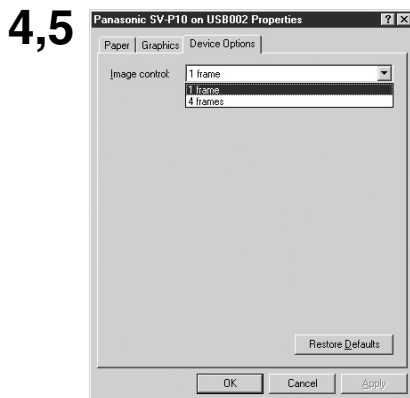
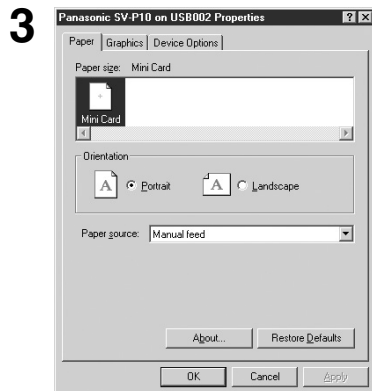
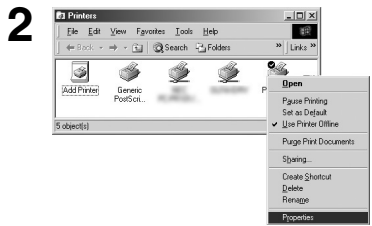
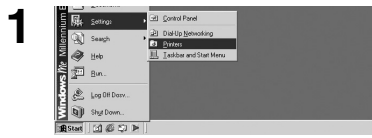


Installing the Printer Driver (Cont.)

Installing from the [Add Printer Wizard] screen.

If the [Add New Hardware Wizard] screen does not appear, install with the following steps.

- 1 Proceed to steps 1 through to 3 on page 13.
- 2 Select [Start] >> [Settings] >> [Printers].
- 3 Double-click the [Add Printer] icon.
 - The [Add Printer Wizard] screen appears.
- 4 Click the [Next] Button.
- 5 Click the [Next] Button.
 - If a screen appears asking you whether the printer is a local printer or network printer, select [Local printer] .
- 6 Click the [Have Disk] Button and enter the path as "D:\Win9X-ME" if your system is Windows98 (98SE). Enter the path as "D:\Win2K-XP" if your system is Windows 2000 (example for D drive assigned as CD-ROM drive).
- 7 Click the [OK] Button.
- 8 Check that [Panasonic SV-P10] is displayed on the [Add Printer Wizard] screen, and then click the [Next] Button.
- 9 Select the port that the printer is connected to, and then click the [Next] Button.
 - Select only the [USB00X] port (e.g. USB001).
- 10 Select [No] when the [Add Printer Wizard] screen appears.
 - Select [Yes] to set as the default printer.
- 11 Click the [Finish] Button.
 - The driver setup is completed.

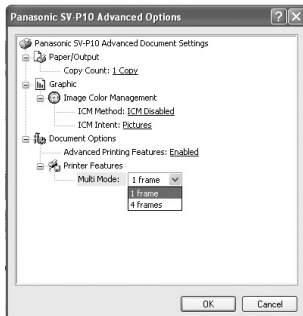
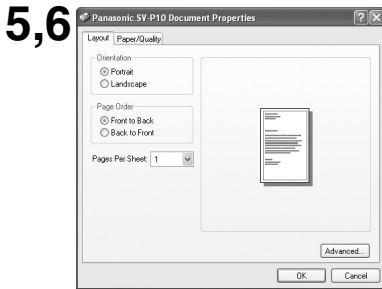
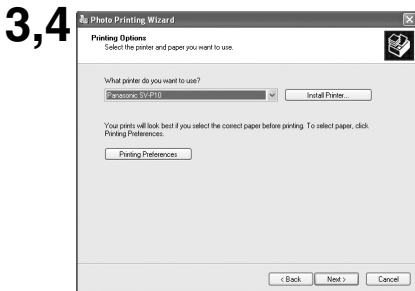


Printer setting

Using this Printer, you can print an image stored on the personal computer. Here described is a method to set the Printer Driver from the Start Menu. Image processing software may also be used for a similar setting. (Some software types may not provide the setting procedure.) Set the Printer Driver before printing. (Image processing software is not supplied. Please purchase one separately.)

- 1 From the [Start] menu, Select [settings] >> [Printers (and Fax)].**
- 2 Right-Click the [Panasonic SV-P10] icon and select [Properties].**
 - Printer driver's dialog box appears.
 - The Properties screen may be shown differently depending on the environment.
- 3 Click on the [Paper] tab, then Select [Portrait] or [Landscape] to set the Print direction.**
- 4 Click on the [Device Options] tab, then click the [▼] mark in the setting box [Image control] to select [1 frame] or [4 frames].**
 - If [4 frames] is selected, the paper is split into four frames, each of which will have the same image.
- 5 Click the [OK] Button.**
 - The setting is completed.

- If you print an image from the image processing software, proceed to printing from the menu after the setting is completed. When [Panasonic SV-P10-USB00X] **1** is displayed, insert a sheet of paper.
- To abort printing, click the [Abort] Button. During printing, the print action stops after the completion of current image printing.
- Please read [Readme] before starting to use.
- Setting up from the [Graphics] tab will not affect any actual prints.
- Whatever the setting is made on the Printer, the setting on the personal computer takes priority.
- Some software may not provide correct printing. (For details, read the manual for the software.)



Printing a file in the computer

■ If you use Windows XP:

If you use Windows XP, you can print an image with the following method. (For details, read the manual for Windows.)

- 1 **Open a folder which includes pictures to be printed, and select [Print this picture (this file)] on the left menu.**
- 2 **After [Photo Printing Wizard] screen is displayed, click the [Next] Button.**
 - If the picture selection screen is displayed, check the picture to be printed, and Click the [Next] Button.
- 3 **Select [Panasonic SV-P10].**
- 4 **Click the [Printing Preference] Button.**
- 5 **Click the [Layout] tab, then select [Portrait] or [Landscape] to set the Print direction.**
- 6 **Click the [Advanced] Button, then select [Multi mode] .**
 - Select [1 frame] or [4 frames].
- 7 **Perform other necessary settings (number of copies, etc.), complete the setting by following the instructions on the screen and insert a sheet of paper. (→ 11)**

■ Notes on Installation of Printer Driver

- If your system is Windows XP or Windows 2000, log on with the user name of [Administrator (administrator of your PC)] (or any user name having an equivalent right to the administrator) and then start to install.
- Use the supplied AC adapter when using this printer connecting with your PC.
- Remove the memory card when using this printer as the printer for your PC.

Uninstalling the Printer Driver

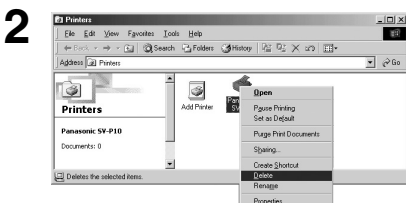
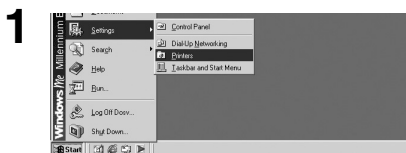
- 1 **Select [Start] >> [Settings] >> [Printers].**
- 2 **Right-click the [Panasonic SV-P10] and select [Delete]**

Others

After Use

- 1 **Hold down the Power Button [⏻] for about 2 seconds.**
 - Turn off the SD Mobile Printer.
- 2 **Remove the Card (→ 10).**
- 3 **Put the Printer into the Carrying Case.**

Uninstalling the Printer Driver



Precautions

To ensure high quality, precise printing, always observe the following points. Failure to observe these points can not only result in poor quality prints, but also paper jams, malfunctions and breakdowns of the SD Mobile Printer.

■ Ink Cassette/Paper Set Notes

- Do not store the Ink Cassettes or paper under high or low temperatures, high humidity, or direct sunlight. Doing so could result in a deterioration of printing quality. They may also become unusable.
- Do not reuse printed paper or Ink Cassettes that have already been consumed.
- Do not open the Ink Cassette/Paper Set package immediately. Wait until warming up just to the surrounding temperature before using it. If the Ink Cassette/Paper Set has been stored at a low temperature, condensation could form when brought into a warmer room.
- If the Ink Cassette/Paper Set is defective due to a manufacturing error on the part of Panasonic, we will replace the Ink Cassette/Paper Set with an equivalent Ink Cassette/Paper Set. Panasonic shall not bear any responsibility beyond replacing the product.
- Do not subject the Ink Cassette or paper to a rapid temperature change.

■ Ink Cassette Notes

- The Ink Cassette is softened at about 55 °C or higher and will be hardened when the temperature is lowered. Under similar severe conditions the Ink Cassette cannot be used. Do not place the Ink Cassette or the Printer fitted with the Ink Cassette in a location subject to high temperatures.
- Do not dispose the protection sheet attached on the paper until the last paper has been consumed.
- The ink cassette is made of plastic. If you discard it, dispose of it by observing the applicable rules in your country or region.

■ Paper Notes

- Do not fold or bend the paper. Insert it into the Paper Insert Slot with the print side (the white side of the paper with no markings on it) facing downwards.
- Dust and humidity damage the paper. Return remaining paper to their original bag, and store them flat.

■ Before, During, and After Printing

- When the ambient temperature or that within the SD Mobile Printer is low, the SD Mobile Printer feeds the paper and stops operating to warm it for 1 or 2 minutes. In this case, the printed image may have faint colors.
- Do not remove the Ink Cassette during printing.
- Do not pull the paper out forcibly, and never add any oscillation on the device during printing.
- Do not feed two or more sheets of paper at a time.
- Do not remove the card or turn the power off while the [ACCESS] Lamp is on.
- Do not add any oscillation or shock. Those may cause damage to the memory card or the data contained in the card.
- Do not touch the paper during printing.
- Since the paper slides forward and back during printing, keep loose in perimeter 10 cm or more away from the printer during the print process.

- Do not open the Ink Cassette Compartment Door during printing.
- Refer to page 22 when paper jam occurs.
- After the power is turned off, the count data to be printed is saved in the printer. After the powers turned on, it starts to print from the next page after the previous one. (The saved count data is reset by the removal of card or battery while the power is on). To start printing from the initial page, press the Clear Button [CLEAR] for about 2 seconds.
- If 0 (zero) is specified for all in the DPOF configuration, all images are printed.
- When using the battery, leaving the printer unused for a period, it automatically turns off the power. (Auto-power-off function) The following values are of the power-off threshold.
 - If the card containing print images is inserted:
Turns off about 20 minutes later.
 - If the card contains no print images or all print jobs have been completed:
Turns off about 5 minutes later.
- Place the Printer on a flat surface for operation.
- If the SD Mobile Printer emits smoke, becomes unusually hot, or gives off an unusual smell, turn off the printer and unplug it.
- If water or other foreign matter gets inside the printer, turn off the printer and unplug it.
- If the surface of the printer becomes broken or cracked, turn off the printer and unplug it.
- If the power cord is damaged (such as the core wires being exposed), turn off the printer and unplug it.
- Do not use the SD Mobile Printer in any way which overloads the electric outlet or wiring.
- Make sure the plug is properly inserted in when using the SD Mobile Printer.
- Do not damage the power cable or plug.
- Remove dust or other foreign matter adhering to the power plug.
- Do not place the SD Mobile Printer on unsteady, inclined, or other unstable surfaces.

- Do not drop or insert metal or flammable objects inside the SD Mobile Printer.
- Do not splash or wet the SD Mobile Printer.
- Do not disassemble or remodel the SD Mobile Printer.
- Do not touch the metal parts on the SD Mobile Printer or the plug during a thunderstorm.
- Do not unplug with wet hands.
- Do not place the SD Mobile Printer in locations with smoke, steam, high humidity, large amounts of dust, or severe vibrations.
- Do not install the SD Mobile Printer in such a way that the power Cable is forcibly bent.
- Do not place heavy objects on the SD Mobile Printer
- Do not move the SD Mobile Printer with the power Cable plugged in.
- Do not unplug by pulling on the power Cable.
- Remove the plug from the outlet as a safety measure when cleaning the SD Mobile Printer or when the SD Mobile Printer will not be used for a long period of time.
- A minute amount of current is consumed even when the SD Mobile Printer power is off.
- Do not touch any internal components other than those specified.
- During printing, the paper moves forward and backward several times. You can be cut if you touch the paper during this operation.
- Do not forcibly pull out the Ink Cassette or paper, shake the printer, or add more paper while printing is in progress.
- Printing in cold or hot temperatures may take a little more time.

■ Notes on Handling Finished Prints

In order to preserve finished prints in the best condition, always observe the following points. Failure to observe these points could result in a deterioration of print quality or injury.

- Do not affix cellophane tape to the printed surface. In particular, be careful not to let plastic desk pads, business card cases, or plastic erasers come into contact with the printed surface.
- A sheet of paper printed is protected by the overcoat. However, rubbing the surface with a hard object and scratching will cause surface flaws or color fade-out.
- Do not touch the printed surface with your fingers.
- Do not spill or apply volatile solvents such as alcohol to the printed surface. Doing so could result in discoloration or fading.
- Do not leave printed surfaces in contact with one another. Doing so could cause color transfer between the two images. Color transfer could also occur if a printed surface is left in contact with any other type of paper under pressure for an extended period of time.
- Do not store prints under conditions of high temperatures or high humidity. Leaving prints under such conditions for an extended period of time could cause a deterioration in print quality. Do not leave prints exposed to direct sunlight.
- Do not scratch the printed surface.

■ Optimal Use of the Battery

Battery Characteristics

This Battery is a rechargeable lithium ion battery. Its ability to generate power is based upon the chemical reaction that takes place inside it. This reaction is susceptible to the surrounding temperature and humidity,

and, if the temperature is too high or too low, the operating time of the Battery becomes shorter. If the Battery is used in an extremely cold environment, the Battery may operate only for about 5 minutes. If the Battery becomes extremely hot, a protective function may operate, and the Battery may become unusable for a while.

Be Sure to Detach the Battery after Use

Be sure to detach the Battery from the SD Mobile Printer. (If it is left attached to the SD Mobile Printer, a minute amount of current is consumed even when the SD Mobile Printer power is off.) If the Battery is left attached to the SD Mobile Printer for a long time, over discharge takes place. The Battery may become unusable after it is charged.

Disposing of an Unusable Battery

- The Battery has a limited life.
- Do not throw the Battery into fire because it may cause an explosion.

Always Keep the Terminals of the Battery Clean

Prevent the terminals from getting clogged with dirt, dust, or other substances.

If you drop the Battery accidentally, check to see if the Battery body and terminals are deformed.

Attaching damaged Battery to the SD Mobile Printer may damage the SD Mobile Printer.

Cautions for Storage

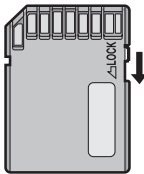
- Extremely high temperatures or low temperatures will shorten the life of the Battery.
- If the Battery is kept in smoky or dusty places, the terminals may rust and cause malfunctions.
- Do not allow the Battery terminals to come in contact with metal objects (such as necklaces, hairpins, etc.) This can result in a short circuit or heat generation and, if you touch the Battery in this condition, you may be badly burned.

■ Notes on Memory Cards

- When the Card is being read, do not remove the Card, turn off the power, or subject it to vibration or impact.
- Do not leave the Card in places where there is high temperature or direct sunlight, or where electromagnetic waves or static electricity are easily generated.
- Do not bend or drop the Card. The Card or the recorded content may be damaged.
- After use, be sure to remove the Card from the SD Mobile Printer and pack the card back into its original case.
- Do not touch the terminals on the back of the Card with your fingers. Do not allow dirt, dust or water to enter it.
- Improper operation may cause the data stored on a card to be damaged or erased. We shall not be liable for such loss by any means.

■ Notes on the SD Memory Card Write-Protect Switch

- The SD Memory Card has a write-protect switch. Sliding the switch to [LOCK] prevents the recording of data to the card as well as the deletion of data from the card. Sliding back the switch permits such operations.



■ Notes on Handling the SD Mobile Printer

- When spraying or using insecticides or other volatile solvents in the vicinity of the SD Mobile Printer, be careful not to allow any to come into contact with the printer. If such solvents come into contact with the printer, they can damage the outer case and cause the surface to peel. Do not allow rubber or plastic products to be in contact with the printer for extended periods of time.
- When not using the SD Mobile Printer for extended periods of time, turn off the power and disconnect the Power Cable from the outlet to conserve energy. (A minute amount of current is consumed even when the SD Mobile Printer power is off.)
- When transporting this printer, during a move for example, pack the printer back into the supplied Carrying Case.

■ Installation Notes

- Install the SD Mobile Printer away from other devices that generate magnetic fields.
- Electromagnetic waves produced in this SD Mobile Printer and in televisions, video games, and other devices can cause mutual interference, disrupting both the display on the television screen and the print picture.

■ Maintenance Notes

- Do not use solvents such as Benzene and paint thinner to wipe the printer since they can damage the surface of the printer and cause the surface to peel. To clean the surface, wipe up any dust with a soft, dry cloth. If the SD Mobile Printer is particularly dirty, soak the cloth in mild kitchen detergent (neutral) diluted with water and wring out thoroughly. Then, wipe off the dust with the cloth and

wipe again with a dry cloth. When using a synthetic cloth, follow the precautions in the cloth's usage instructions.

■ Internal Temperature

- Although it varies with the ambient temperature, if the internal temperature of the SD Mobile Printer rises above a certain level while printing, the [ERROR] Lamp lights (or flashes). In this situation, the printing operation will halt temporarily. This is not a malfunction. After waiting for a few minutes for the temperature to drop, the SD Mobile Printer will automatically resume printing.

■ Condensation

- When a bottle is taken out from a refrigerator in summer and left standing for a while for instance, droplets of water will form on it. This phenomenon is known as condensation. Condensation will form if the printer or Ink Cassette/Paper Set is moved to a location with a considerable difference in temperature or humidity, such as:

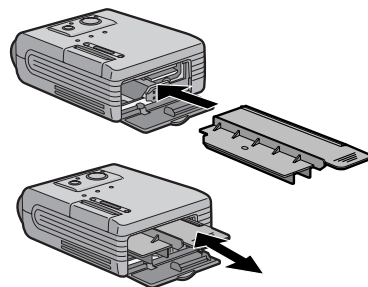
- A high-humidity location, such as one filled with steam
- When suddenly moved from an air-conditioned environment to one with high temperatures and high humidity
- A room that has just been heated

If condensation occurs, Printer cannot be used. Turn the power on and wait for 1 hours. If the paper or rollers are damp with condensation, the printed surface that is produced may be degraded.

■ About Unclean Thermal Heads

If a line appears across a printed picture and pictures cannot be printed clearly, the Thermal head, located in the insertion portion of the Ink Cassette, may be dirty. In this case, clean it with the auxiliary Head Cleaner.

Open the Ink Cassette Compartment Door, remove the Ink Cassette and push the head cleaner in and out as illustrated.



- You can use a Head Cleaner about 150 times.

Error Lamp

The [ERROR] Lamps lights (or flashes) when the Printer cannot print or the battery cannot be charged. How the lamp lights (flashes) indicates the following probable causes.

About this Printer

Status of lamp	Probable cause
[ERROR] Lamp flashes.	<ul style="list-style-type: none"> • There is no Ink Cassette. Insert the Ink Cassette. • There is no ink. Replace the Ink Cassette with a new one. • If the lamp still flashes after the above replacement, the printer may be defective. Contact your nearest Panasonic dealer.
[PRINT] Lamp and [ERROR] Lamp flash simultaneously.	<ul style="list-style-type: none"> • Paper jam has occurred. Turn the power off and remove the jammed paper. • If the jammed paper still remains after the removal of paper, the printer may be defective. Contact your nearest Panasonic dealer.
[ACCESS] Lamp and [ERROR] Lamp flash simultaneously.	<ul style="list-style-type: none"> • There is no picture on the card. Use a card with images recorded on it. • An incompatible card is being used. Insert a card that the SD Mobile Printer can use.
<ul style="list-style-type: none"> • [ERROR] Lamp and [PRINT] Lamp flash simultaneously. • [ERROR] Lamp lights. 	<ul style="list-style-type: none"> • This could indicate a number of suspected faults. If the lamp still flashes after the reset of power, contact your nearest Panasonic dealer.
<ul style="list-style-type: none"> • Multi picture mode [田] Lamp and [ERROR] Lamp flash simultaneously. 	<ul style="list-style-type: none"> • Strong light has entered from the paper sliding slot. Such strong light may cause malfunction. Face the printer in the other direction.
[PRINT] Lamp lights and [ERROR] Lamp flashes.	<ul style="list-style-type: none"> • The ambient temperature or that within the Printer is too high. Wait until the temperature lowers.

About the Battery

Status of lamp	Probable cause
[卍] Lamp flashes.	<ul style="list-style-type: none"> • If those lamps are flashing while the power is turned off, the battery is in charging. Wait until the completion of battery charging. • If those lamps are flashing while the power is on, it indicates that battery power is running out. Charge up the battery.
[卍] Lamp and [ERROR] Lamp flash simultaneously.	<ul style="list-style-type: none"> • Detach the Battery and then reattach the Battery. If the lamp still lights, the Printer or the battery may be defective. Contact your nearest Panasonic dealer.
[卍] Lamp flashes and [ERROR] Lamp lights.	<ul style="list-style-type: none"> • The temperature of the Battery is extremely high. Wait until the Battery has cooled off.

Messages from the Printer Driver

Those messages appear when this printer is used with your PC.

Error Message	Meaning/Action
Please wait.	• Wait for a moment.
Please insert paper.	• There is no paper. Set the paper.
There is no ink.	• The Ink Cassette is not inserted. Insert the Ink Cassette. • There is no ink. Replace the Ink Cassette with a new one.
A paper jam has occurred.	• Paper jam has occurred. Reset the power and remove the jammed paper. If the message is still displayed after the removal of paper, the printer may be defective. Contact your nearest Panasonic dealer.
Hardware Error occurred. Please abort printing.	• This could indicate a number of suspected faults. Abort printing and cancel the print job. If the message is still displayed after the reset of power, contact your nearest Panasonic dealer.
The printer is not corresponding to this printer driver. Please abort printing.	• Confirm that the printer driver is installed correctly.
The printing process will be aborted.	• The print job is cancelled.
Error occurred. Turn the printer's power off and then back on, and then click [Restart] for printing or click [Abort] for abort.	• Some error has occurred. Reset the power, and then restart printing by clicking [Restart], or cancel the print job by clicking [Abort].
Communication with the printer has failed. First, check that the printer is connected properly, and click [Restart] for printing or click [Abort] for abort.	• Communication error has occurred. Confirm the cable connection, and then restart printing by clicking [Restart], or cancel the print job by clicking [Abort].

Before Requesting Service

If the trouble persists even when the action suggested below has been taken, press the Power Button to turn off the power and disconnect and re-connect the Power Cable.

1: The power cannot be switched on.

1: The power plug is not plugged in correctly.

2: The printer does not print.

2-1: The Ink Cassette is not oriented properly, or was not pushed all the way in.

2-2: There is slack in the Ink Film.

Take up the slack in the Ink Film.

2-3: The paper was loaded back and front in the reverse side.

2-4: The internal temperature of the printer is too high.

Wait.

2-5: Condensation has formed.

Wait.

3: Printing is not of the expected quality.

3-1: The paper being used is not of the specified type.

3-2: The paper was not loaded correctly.

3-3: Thermal head is dirty. Clean it with the auxiliary Head Cleaner.

4: The printed pictures are distorted.

4-1: The printer is located near a television, video game, or other source of electromagnetic waves.

Move the printer so that it is at least one meter away from the television, video game, etc.

4-2: The printer is located near a stereo speaker, large motor, or other source of a strong magnetic field.

Move the printer away from the device generating the magnetic field.

5: Paper jams occur frequently.

5: The paper is creased or curled.

Before Requesting Service (Cont.)

6: Battery runs down quickly.

6-1: Are you using the Battery in an extremely cold place? In cold places, the operating time of the Battery becomes shorter.

6-2: Has the Battery worn out? If the operating time is still too short even after the Battery is fully charged, the Battery has worn out.

7: Paper is discharged from the back of the printer with no printing.

7: If any error has occurred inside of the printer, paper is discharged with no printing.

8: Paper is discharged from the front of the printer with no printing.

8: There is no ink in the Ink Cassette. Replace the Ink Cassette with a new one.

9: The [ACCESS] Lamp stay lit for a long time.

9: The high resolution image takes long time to read. The following are approximate reading time per resolution.

640×480 (VGA) :About 4 seconds

1280×960 (1.3 million pixels) :

About 12 seconds

1600×1200 (2 million pixels) :

About 20 seconds

2240×1680 (4 million pixels) :

About 40 seconds

10: The date specified in DPOF is printed within an image.

10: If your device can specify the date information in DPOF, such the date information may be printed within an image.

11: The printer wants to restart printing from the initial page during printing.

11: Press the Clear Button[CLEAR] for about 2 seconds.

12: While the printer is ready to start, paper has not been fed into the printer.

12: Remove the paper and confirm that the print lamp is on. Then re-feed the paper fully into the printer.

13: The printer wants printing only the selected images.

13: Use the printer applicable for DPOF configuration and implement DPOF configuration through its software. (This printer can use the information formatted with DPOF configuration, but cannot implement DPOF configuration itself).

14: The full picture is printed with part of the image is cut off.

14: If the print aspect ratio of the image is about 4:3, its edge is automatically trimmed because this printer intends to print using the maximum area available to print.

15: Printing is tried, but the Printer remains unoperated.

15-1:When the ambient temperature or that within the SD Mobile Printer is low, the SD Mobile Printer feeds the paper and stops operating to warm itself for a while. Wait for one or two minutes until the temperature rises.

15-2:If you insert a sheet of paper before the Access Lamp [ACCESS] turns OFF and the Print Lamp [PRINT] turns ON, printing does not occur. Re-insert the paper.

16: When you print an image from the personal computer, the image size does not match with the paper.

16: To print an image matching with the paper, convert the image to one consisting of 320× 256 dots with the resolution 203 dpi. (Some applications may vary the aspect ratio.) Some applications may not allow the size or resolution to be set.

17: If two SD Mobile Printers are connected to the personal computer, printing does not occur.

17: Two or more SD Mobile Printers connected to one personal computer do not operate normally. Do not connect two or more SD Mobile Printers.

18: The Power Lamp starts flashing while the SD Mobile Printer is printing.

18: The flashing Power Lamp indicates that the number of printable copies is reduced. (A few more copies can be printed.) When the Power Lamp flashes more frequently, printing will stop. (If a sheet of paper is being printed, printing will stop after it is completed to be printed.)

Specifications

SD Mobile Printer (Panasonic SV-P10U)

Information for Your Safety

Power Source:	DC 4.9 V(AC Adaptor), DC 3.7 V(Battery)
Power Consumption:	Approx. 4.8 W
Printing System	Line thermal transfer with Variable Dot system
Printing Speed	Approx. 70 sec./sheet
Print Media	
Ink Film	Cassette type (exclusive), 3 color field successive printing (cyan, magenta, yellow, overcoat) 9×12 mm
Printing Paper	2-3/4"×1-1/2"(69×38 mm) Printing Paper, 2-3/4"×1-1/2"(69×38 mm) 1 Pre-Cut Adhesive Paper, 2-3/4"×1-1/2"(69×38 mm) 4 Pre-Cut Adhesive Paper (Picture Dimensions) 2-3/4"×1-1/2"(69×38 mm) Printing Paper: 1-9/16"×1-1/4" (40×32 mm), 2-3/4"×1-1/2"(69×38 mm) 1 Pre-Cut Adhesive Paper: 1-9/16"×1-1/4" (40×32 mm), 2-3/4"×1-1/2"(69×38 mm) 4 Pre-Cut Adhesive Paper: 1-9/16"×1-1/4" (40×32 mm)
Paper Feeding System	Manual insertion
Number of printing pixels	203×203 dpi
Functions	Full-picture print, four-picture print
Print Head	Film thermal head, 8 dots/mm (203 dpi)
Input Socket	For USB
Compatible Cards	SD Memory Card/MultiMediaCard
Format	SD-Picture, Exif, DCF, CIFF, SiSRIF, JFIF
Image Format	JPEG, TIFF (non-compressed)
Number of Pixels	6144×4096 Max, Sampling ratio 4:4:4, 4:2:2, 4:2:0, 4:1:1
Thawing Time	Approx. 4 seconds (307200 pixels)
Allowable Temperature	Not in use: -10°C~50°C In use: 0°C~40°C
Allowable Humidity	Not in use: 0%~90% In use:35%~80%
External Dimensions	Approx. 3-3/8"×1-3/16"×2-11/16" (85(W)×30(H)×68(D) mm) (Without protruding portion)
Weight	Approx. 6.53 oz (185 g) (without Battery, Ink Cassette, SD Memory Card)

AC Adaptor (Panasonic VSK0617)

Information for Your Safety

Power Source:	AC 110-240 V 50/60Hz
Input Current:	0.2 A
DC Output	DC 4.9 V, 1.4 A

Dimensions	Approx. 59(W)×31(H)×96(D) mm
Weight	130 g

Battery Pack (Panasonic CGR-S601)

Information for Your Safety

Nominal Voltage:	3.7 V
Nominal Capacity:	1,350 mAh

Dimensions	Approx. 20(W)×21(H)×55(D) mm
Weight	Approx. 40 g

ONLY FOR U.S.A

Limited Warranty

**Panasonic Consumer Electronics Company,
Division of Matsushita Electric Corporation of
America**
One Panasonic Way Secaucus, New Jersey 07094

**Panasonic Sales Company,
Division of Matsushita Electric of Puerto Rico, Inc.**
AVE. 65 de Infantería, Km. 9.5, San Gabriel Industrial
Park, Carolina, Puerto Rico 00985

PANASONIC SD Products Limited Warranty

Limited Warranty Coverage

If your product does not work properly because of a defect in materials or workmanship, Panasonic Consumer Electronics Company or Panasonic Sales Company (collectively referred to as "the warrantor") will, for the length of the period indicated on the chart below, which starts with the date of original purchase ("warranty period"), at its option either (a) repair your product with new or refurbished parts, or (b) replace it with a new or a refurbished product. The decision to repair or replace will be made by the warrantor.

Product or Part Name	Parts	Labor
SD Multi AV Device, SD Mobile Printer (except items listed below)	One (1) year	Ninety (90) days
CMOS Camera Assembly	Six (6) months	Ninety (90) days
Rechargeable Battery Pack, SD Memory Card, AC Adaptor USB Reader-Writer (in exchange for defective item)	Ninety (90) days	Not Applicable

During the "Labor" warranty period there will be no charge for labor. During the "Parts" warranty period, there will be no charge for parts. You must carry-in or mail-in your product during the warranty period. If non-rechargeable batteries are included, they are not warranted. This warranty only applies to products purchased and serviced in the United States or Puerto Rico. This warranty is extended only to the original purchaser of a new product which was not sold "as is". A purchase receipt or other proof of the original purchase date is required for warranty service.

Carry-In or Mail-In Service

For Carry-In or Mail-In Service in the United States call 1-800-211-PANA (1-800-211-7262).
For assistance in Puerto Rico call Panasonic Sales Company (787)-750-4300 or fax (787)-768-2910.

Limited Warranty Limits And Exclusions

This warranty ONLY COVERS failures due to defects in materials or workmanship, and DOES NOT COVER normal wear and tear or cosmetic damage. The warranty ALSO DOES NOT COVER damages which occurred in shipment, or failures which are caused by products not supplied by the warrantor, or failures which result from accidents, misuse, abuse, neglect, mishandling, misapplication, alteration, faulty installation, set-up adjustments, misadjustment of consumer controls, improper maintenance, power line surge, lightning damage, modification, or commercial use (such as in a hotel, office, restaurant, or other business), rental use of the product, service by anyone other than a Factory Servicenter or other Authorized Servicer, or damage that is attributable to acts of God.

THERE ARE NO EXPRESS WARRANTIES EXCEPT AS LISTED UNDER " LIMITED WARRANTY COVERAGE". THE WARRANTOR IS NOT LIABLE FOR INCIDENTAL OR CONSEQUENTIAL DAMAGES RESULTING FROM THE USE OF THIS PRODUCT, OR ARISING OUT OF ANY BREACH OF THIS WARRANTY. (As examples, this excludes damages for lost time, travel to and from the servicer, loss of media or images, data or other memory content. The items listed are not exclusive, but are for illustration only.) **ALL EXPRESS AND IMPLIED WARRANTIES, INCLUDING THE WARRANTY OF MERCHANTABILITY, ARE LIMITED TO THE PERIOD OF THE LIMITED WARRANTY.**

Some states do not allow the exclusion or limitation of incidental or consequential damages, or limitations on how long an implied warranty lasts, so the exclusions may not apply to you.

This warranty gives you specific legal rights and you may also have others rights which vary from state to state. If a problem with this product develops during or after the warranty period, you may contact your dealer or Servicenter. If the problem is not handled to your satisfaction, then write to the warrantor's Consumer Affairs Department at the addresses listed for the warrantor.

PARTS AND SERVICE WHICH ARE NOT COVERED BY THIS LIMITED WARRANTY ARE YOUR RESPONSIBILITY.

Customer Services Directory

For Product Information, Operating Assistance, Literature Request, Dealer Locations, and all Customer Service inquiries please contact:

1-800-211-PANA(7262), Monday-Friday 9am-9pm Saturday-Sunday 9am-7pm, EST.
or send e-mail consumerproducts@panasonic.com

Web Site: <http://www.panasonic.com>

You can purchase parts, accessories or locate your nearest servicenter by visiting our Web Site.

Accessory Purchases:

1-800-332-5368 (Customer Orders Only)

Panasonic Services 20421 84th Avenue South, Kent, WA 98032

(6 am to 5 pm Monday - Friday; 6 am to 10:30 am Saturday; PST)

(Visa, MasterCard, Discover Card, American Express, Check)

Product Repairs***Centralized Factory Servicenter***

MAIL TO :

Panasonic Services Company

1705 N. Randall Road,

Elgin, IL 60123-7847

Attention: SD Products Repair

Please carefully pack and ship, prepaid and insured, to the Elgin Centralized Factory Servicenter.

Customer's in Puerto Rico, please ship or carry in to location below ("Service in Puerto Rico").

Service in Puerto Rico

Matsushita Electric of Puerto Rico, Inc. Panasonic Sales Company/Factory Servicenter:

Ave. 65 de Infanteria. Km. 9.5, San Gabriel Industrial Park, Carolina, Puerto Rico 00985

Phone (787) 750-4300 Fax (787) 768-2910

As of January 2002

**Panasonic Consumer Electronics Company,
Division of Matsushita Electric Corporation of America**

Executive Office:

One Panasonic Way Secaucus, NJ 07094
(201) 348-7000

Panasonic Company East: 6749 Baymeadow Drive, Glen Burnie, MD 21060

Panasonic Company Central: 1707 North Randall Road, Elgin, IL 60123

Panasonic Company West: 6550 Katella Avenue, Cypress, CA 90630

Division of Matsushita Electric Corporation of America

Panasonic Sales Company

Division of Matsushita Electric of Puerto Rico, Inc. ("PSC")

Ave. 65 de Infanteria, Km. 9.5, San Gabriel Industrial Park, Carolina, PR 00985

Panasonic Canada Inc.: 5770 Ambler Drive, Mississauga, ON L4W 2T3



VQT9628
F0102Mk0 (1000[Ⓐ])